



**2021 PRODUCT CATALOG**









# BRUNSWICK

---

## THE MOST PRESTIGIOUS NAME IN BILLIARDS

In 1845, John Moses Brunswick set out to build the world's best billiards tables. Applying his formidable craftsmanship, a mind for innovation, and a passion for the game, he created a company synonymous with quality and billiards excellence.

Since then, Brunswick has evolved the sport of billiards and set lasting standards for years to come. We continue the tradition of creating tables that are not only engineered for premium performance, but are designed to be works of art.

Brunswick Billiards tables have been the choice of presidents, sports stars, celebrities, and industry leaders. A Brunswick table creates a natural place to gather, laugh, enjoy the company of others, and make strong, lasting connections.

# TABLE OF CONTENTS

5

## BILLIARDS TABLES

6	Billiard Table Construction	16	Bridgeport Billiards Table	25	Bayfield Billiards Table
8	Gold Crown VI Billiards Table	17	Sanible Billiards Table	26	Allenton Billiards Table
10	Birmingham Billiards Table	18	Canton Billiards Table	28	Billiards Cloth
11	MacKenzie Billiards Table	19	The Henderson Billiards Table	29	Room Size Chart
12	Edinburgh Billiards Table	20	Black Wolf Pro Billiards Table		
13	Brixton Billiards Table	21	Oakland Billiards Table		
14	Pursuit Billiards Table	22	Glenwood Billiards Table		
15	Equinox Billiards Table	24	Black Wolf Billiards Table		

30

## RECREATIONAL GAME TABLES & GOLF

30	Shuffleboard	40	Conversion Tops and Caddy	46	Air Hockey Tables
37	Table Tennis	41	Foosball Tables	49	Putting Greens

54

## FURNITURE

54	Centennial Collection	60	Dartboard Cabinets
59	Traditional Collection	60	Storage Drawer

61

## CUE RACKS, CUES AND ACCESSORIES

61	Billiards Cue Racks	69	Play Packages	61	Billiards Table Covers
64	Billiards Cues	70	Billiard Balls	72	





# BRUNSWICK BILLIARDS TABLES

---

Today's Brunswick billiards tables are masterpieces of craftsmanship, design, and innovation, continuing the legacy of excellence begun almost two centuries ago.





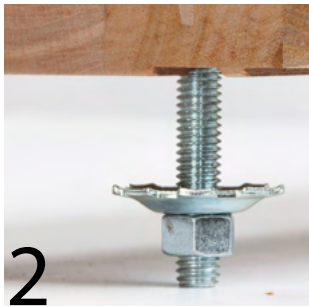
# THE GAME CHANGERS

Brunswick's legacy is derived from building the best. If you look inside a Brunswick table, this becomes clear as you see innovation after innovation. Every extra step we take in the building process ensures we achieve superior accuracy and consistency in our tables. We are proud to stand behind the quality, materials and workmanship of every product that carries the Brunswick name.



## 1 HIGH PERFORMANCE™ NUT PLATES

Our exclusive nut plates allow for the application of 70% more torque to each connection, ensuring a solid, seamless transition between rail and slate that enhances performance and playability.



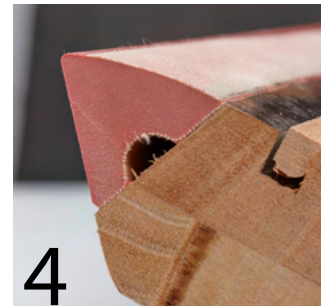
## 2 HARDENED DOME WASHER

Our hardened dome washer ensures that the rail is gripped directly on the table, providing constant tension, which prevents turning, sinking and loosening over time.



## 3 SUPERSPEED® CUSHION RUBBER

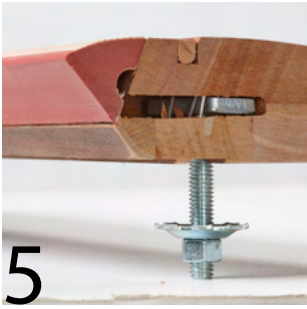
Brunswick SuperSpeed cushions have set the standard for over 70 years. The proprietary rubber formulation provides greater accuracy, control and rail consistency.



## 4 HIGH PRESSURE BONDING

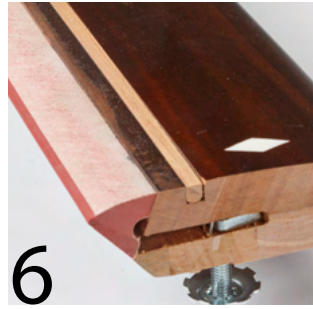
Precision is critical and cushion rubber bonding and placement are essential to the overall performance. Brunswick achieves superior accuracy and consistency through proprietary pneumatically controlled machines that bond the cushion rubber to the rails for a precision fit that doesn't vary.





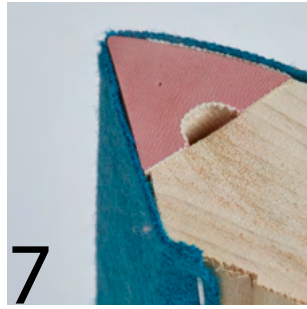
### 5 ACCURATE NOSE HEIGHT

Banking and rebound accuracy rely on the nose height of the table's cushion rubber. Brunswick's automated, pneumatically controlled machines precisely place the cushion rubber ensuring consistent nose height all around the table that meets the 64% of a 2.25" diameter ball standard.



### 6 SOLID HARDWOOD RAILS

Brunswick rails are made of solid hardwood. The rails are machined to exacting standards and provide a solid foundation behind the cushion rubber to ensure exceptional accuracy and performance.



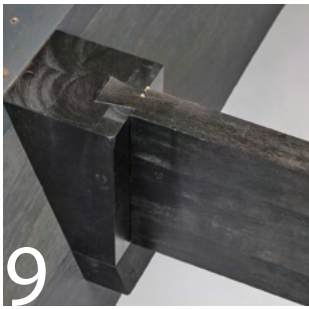
### 7 MACHINE RECESSED AREA

Recessed areas machined into the rail allow the rail cloth to be stapled securely many times over and not interfere with the rail attachment to the slate.



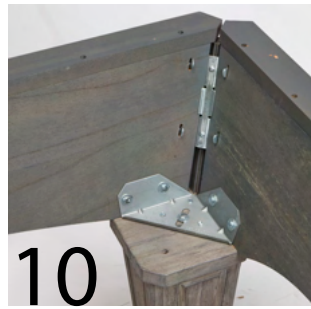
### 8 STATE-OF-THE-ART FINISHING

Brunswick uses the best materials possible and undergoes the most demanding and time-consuming process to achieve the optimal billiard table finish. From using polyurethane from world class finish suppliers to conducting a 12-step or more finishing process, Brunswick cuts no corners. The evidence is in the end results... Go ahead and feel it!



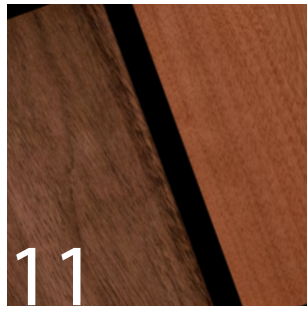
### 9 SOLID WOOD DOVETAIL SUPPORT

Solid wood cross supports utilize dovetail joinery to connect the table frame at each slate joint. This provides superior performance, supporting the slate joints as if the slate was one piece.



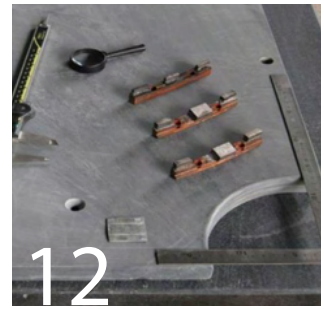
### 10 ROCK-SOLID AND READY TO INSTALL

Brunswick tables come ready to assemble. We utilize machine nut and bolt construction techniques to achieve a rock solid fine furniture product that is easy to deliver and install in homes.



### 11 KILN-DRIED, STAINED, AND SEALED

Brunswick tables are built to last for generations. All solid wood materials are kiln-dried to a 6-8% moisture level, then stained and sealed to keep moisture out. A durable furniture finish completes the look of each product.



### 12 BRUNSWICK CERTIFIED SLATE

Our slate is measured to a rigorous standard twice exceeding industry specification. The slate is precision-machined and leveled to within .01". Brunswick then checks for flatness on each side four times throughout the machining and curing process. Finally, each set is quality inspected and certified for playability.



## GOLD CROWN VI

The Gold Crown VI continues Brunswick's tradition of excellence as the newest edition of the legendary table series. The Gold Crown VI features a familiar design with modern styling. The new, low-profile leg base and hidden stretcher provide a streamlined appearance while the angular canted leg emphasizes the clean lines. The table also features all new rail castings in a brushed nickel finish for a sleek, high-end aesthetic.





Skyline Walnut/Espresso Finish

## FEATURES

- High Performance™ Nut Plate Construction
- SuperSpeed® Cushion Rubber
- Brunswick Certified Premium Slate



Matte Black Finish

Size	8' (2.4 m), 9' (2.7 m)
Dimensions (L x W)	102.6" x 58.8" (260.6 x 148.4 cm) 114.6" x 64.8" (291.1 x 164.6 cm)
Weight	1,085 lbs (493.2 kg) / 1,221 lbs (553.8 kg)*
Pocket Options	Drop Pocket or Gully
Legs	Standard
Slate	1" Framed
Cloth Color	14 options



Mahogany Finish

## TOURNAMENT EDITION

The Gold Crown VI Tournament Edition table features tighter pockets engineered to strict World Pool-Billiard Association specifications. Table decals included.



\* Shipping weight



# BIRMINGHAM

Combining rugged charm with an industrial, loft-style look makes the Birmingham a perfect choice for modern game rooms in need of a vintage touch. Featuring a distressed, rough-hewn finish with a cast iron decorative pedestal and turnbuckle stretcher element, the Birmingham is stylish and rustic down to the last detail.



## FEATURES

- Brunswick Certified Premium Slate
- SuperSpeed® Cushion Rubber
- Hand-hammered Rail Sights
- High Performance™ Nut Plate Construction
- Rough-hewn Finish with Distressing
- Cast Iron Pedestal Base, Decorative Rail Spacer, and Turnbuckle Stretcher Element
- Matching Wall Rack Sold Separately

Size	8' or 9' (2.4 m / 2.7 m)
Dimensions	102" x 58" (259.1 x 147.3 cm)
	114" x 64" (289.6 x 165.6 cm)
Weight	1,123 lbs* (509.4 kg)
	1,361 lbs* (617.3 kg)
Pockets	Drop Pocket
Legs	Cast Iron
Slate	1" Framed

\* Shipping weight





# MACKENZIE™

A dramatic double pedestal lends a contemporary look to a traditional design. The slightly distressed finish, mother-of-pearl rail sights, and graceful sweeping lines of the aprons give this table an artistic style that is fashioned to last.



## FEATURES

- Brunswick Certified Premium Slate
- High Performance™ Nut Plate Construction
- SuperSpeed® Cushion Rubber
- Mother-of-Pearl Rail Sights
- Matching Wall Rack Sold Separately

Size	8' (2.4 m)
Dimensions (L x W)	102" x 58" (259.1 x 147.3 cm)
Weight	813 lbs* (368.8 kg)
Pockets	Drop Pocket
Legs	Unique
Slate	1" Framed
Cloth Color	14 options
Finish	Aged Linen

\* Shipping weight





# EDINBURGH™

Alternating white oak and ash grained wood with metal trimming and carriage bolt heads makes the Edinburgh an ode to rustic heritage. A metal-trimmed pedestal base dovetails out and gives additional support and style. The Edinburgh's play is a smooth contrast to the hard lines of hand-strewn wood that gives players perfect performance with vintage accents.



## FEATURES

- High Performance™ Nut Plate Construction
- SuperSpeed® Cushion Rubber
- Base Frame Dovetails
- Hammered Metal Rail Sights
- Matching Wall Rack Sold Separately

Size	8' (2.4 m)
Dimensions (L x W)	102.1" x 58.1" (259.3 x 147.6 cm)
Weight	887 lbs* (402.3 kg)
Pockets	Drop Pocket
Legs	Unique
Slate	1" Framed
Cloth Color	14 options
Finish	Weathered Oak

\* Shipping weight





## BRIXTON™

Who says contemporary and comfortable have to be mutually exclusive? Our Brixton table features clean lines and a sturdy yet streamlined design that showcases a unique “X” foundation — a contemporary look that’s nicely balanced with hammered metal details and an antiqued finish that highlights the table’s warm, natural patterns, and rough-hewn texture.



### FEATURES

- High Performance™ Nut Plate Construction
- SuperSpeed® Cushion Rubber
- Base Frame Dovetails
- Hammered Metal Rail Sights
- Matching Wall Rack Sold Separately

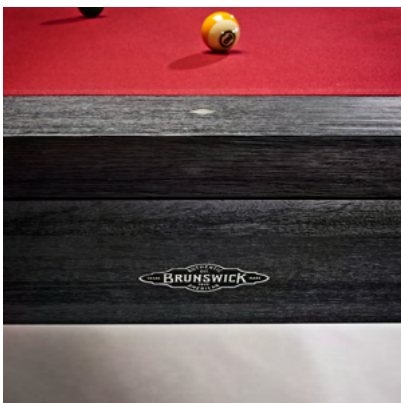
Size	8' or 9' (2.4 m or 2.7 m)
Dimensions (L x W)	100.5" x 56.6" (255.3 x 143.8 cm) 112.5" x 62.6" (285.8 x 159 cm)
Weight	908 lbs* (411.9 kg) 1,127 lbs* (511.2 kg)
Pockets	Drop Pocket
Legs	Unique
Slate	1" Framed
Cloth Color	14 options
Finish Options	Driftwood
<i>* Shipping weight</i>	





## PURSUIT™

A work of art that will command attention in any setting, the Pursuit is a combination of streamlined, angular aesthetics, a contemporary black wire brushed finish and Brunswick's superior craftsmanship and playability. Your family will enjoy generations of great play and entertainment around this unique billiards table.



### FEATURES

- High Performance™ Nut Plate Construction
- SuperSpeed® Cushion Rubber
- Base Frame: Solid Hardwood
- Hammered Metal Rail Sights
- Matching Wall Rack Sold Separately

Size	8' (2.4 m)
Dimensions (L x W)	103.1" x 59.1" (261.9 x 150.2 cm)
Weight	897 lbs* (348.8 kg)
Pockets	Drop Pocket
Legs	Unique
Slate	1" Framed
Cloth Color	14 options
Finish	Black Wire Brush

\* Shipping weight





# EQUINOX™

Equinox is defined by its metal X styled pedestal & elegant graphite black finish. Using solid wood rails wrapped in metal and sporting polished stainless steel rail sights, the Equinox delivers versatility of style and finish with the legendary play of the Brunswick brand.



## FEATURES

- High Performance™ Nut Plate Construction
- SuperSpeed® Cushion Rubber
- Polished Stainless-Steel sights
- Metal Pedastals & Stretchers - Graphite Finish
- Matching Wall Rack Sold Separately

Size	8' (2.4 m)
Dimensions (L x W)	103.1" x 59.1" (261.9 x 150.2 cm)
Weight	960 lbs* (435.4 kg)
Pockets	Drop Pocket
Legs	Unique
Slate	1" Framed
Cloth Color	14 options
Finish	Graphite Black

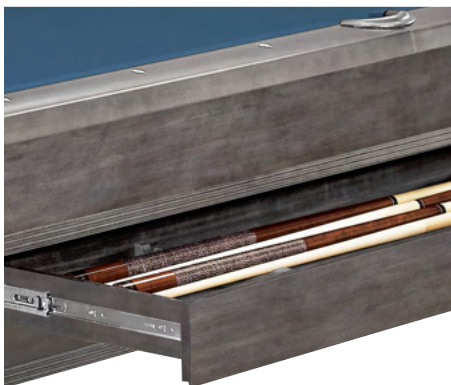
\* Shipping weight





# BRIDGEPORT™

From its luxurious finish to its distinctive legs and pockets, the Bridgeport is designed with true transitional spirit. It's a blend of styles that can be adapted to an individual's preference. Beauty and practicality are key aspects of the Bridgeport, and it's built to meet the demands of an active household. This table's drawers can hold all the contents of any Brunswick play package.



## FEATURES

- High Performance™ Nut Plate Construction
- Brunswick Certified Premium Slate
- SuperSpeed® Cushion Rubber
- Diamond-Shaped Mother-of-Pearl Rail Sights
- Enclosed Pocket
- Cue and accessories drawers are available in all finishes.

Size	8' (2.4 m)
Dimensions (L x W)	99.6" x 55.6" (253 x 141.2 cm)
Weight	761 lbs* (345.2 kg)
Pockets	Drop Pocket
Legs	Unique
Slate	1" Framed
Cloth Color	14 options
Finish Options	Espresso, Graphite

\* Shipping weight





# SANIBEL™

The Sanibel features a modern design with ultra clean lines and minimalist aesthetic. Specialized hand-hammered sights provide unique detailing and the new low-profile pockets keep the table incredibly sleek. The Sanibel is available in Rustic Dark Brown and Rustic Gray, a weathered finish that showcases the wood's natural grain and texture.



## FEATURES

- Brunswick Certified Premium Slate
- High Performance™ Nut Plate Construction
- SuperSpeed® Cushion Rubber
- Solid Hardwood Construction
- Hand Hammered Rail Sights
- Matching Cue Rack Available
- Matching Dining Top Sold Separately

Size	8' (2.4 m)
Dimensions	102" x 58" (259.1 x 147.3 cm)
Weight	880 lbs* (399.2 kg)
Pockets	Drop Pocket
Legs	Unique
Slate	1"
Cloth Color	14 options
Finish Options	Rustic Dark Brown, Rustic Gray

\* Shipping weight





## CANTON™

Nothing says “rack ‘em up” like the rustic-meets-industrial charm of our Canton pool table. With its artful hand-hammered sights and aged metal turnbuckle stretchers, corners, and hardware, this eight-foot table is the perfect marriage of proud craftsmanship and industrial design.



### FEATURES

- High Performance™ Nut Plate Construction
- SuperSpeed® Cushion Rubber
- Brunswick Certified Premium Slate
- Aged Metal Turnbuckle Stretchers, Corners, and Hardware
- Hand-Hammered Sights
- Matching Cue Rack Available

Size	8'
Dimensions (L x W)	102.1" x 58.1" (259.3 x 147.6 cm)
Weight	769 lbs* (348.8 kg)
Pockets	Drop Pocket
Legs	Unique
Slate	1" Framed
Cloth Color	14 options
Finish Options	Black Forest, Rustic Grey

\* Shipping weight





## THE HENDERSON™

The Henderson offers the sleek look of a fine dining room table with the legendary playability of the Brunswick Billiards brand. A beautiful table in its own right, the Henderson offers the versatility to quickly change your game room to fit your needs, simply use the optional dining top and transform your game room into a banquet room, a conference room, an arts & crafts room or leave it off and enjoy hours of play on this elegant model.



### FEATURES

- Polished Stainless-Steel Sights & Leg Caps
- Espresso Finish
- Brunswick Certified Premium Slate
- SuperSpeed® Cushion Rubber
- High Performance™ Nut Plate Construction

Size	8' (2.4m)
Dimensions (L x W)	103.1" x 59.1" (261.9 x 150.2 cm)
Weight	880 lbs* (399.2 kg)
Pockets	Enclosed Low Profile
Legs	Unique, Standard
Slate	1" Frame
Cloth Color	14 options
Finish	Espresso

\* Shipping weight





## BLACK WOLF PRO™

The Black Wolf Pro, a superb combination of modern styling and rigorous engineering standards, features attractive and sturdy pedestal-style legs, a leg stretcher, foot levelers, and gully return is available. Our competition-style Gold Crown wall rack is also available to beautifully match the Black Wolf Pro table.



### FEATURES

- Brunswick Certified Premium Slate
- SuperSpeed® Cushion Rubber
- Polished Stainless-Steel sights
- High Performance™ Nut Plate Construction
- Round Rail Sights
- Optional Gully Return

Size	7' / 8' / 9' (2.1 / 2.4 / 2.7 m)
Dimensions (L x W)	89.25" x 51.25" (226.7 x 130.2 cm)
	101.25" x 57.25" (257.2 x 145.4 cm)
	113.25" x 63.25" (287.7 x 160.7 cm)
Weight *	605 lbs (Pocket) 635 lbs (Gully) (274 / 288 kg)
	797 lbs (Pocket) 827 lbs (Gully) (362 / 375 kg)
	989 lbs (Pocket) 1,019 lbs (Gully) (449 / 462 kg)
Pocket	Drop Pocket or Gully
Legs	Pedestal
Slate	1" Framed
Cloth Color	14 Options
Finish	Matte Black

\* Shipping weight





# OAKLAND™

The straight lines, simple design, and heavy proportion of the Oakland II table are trademark characteristics of the Arts & Crafts style of furniture originally popular during the 1890s to 1910s. This distinct table features solid wood rails, leather pockets, two storage drawers, and comes in beautiful espresso finish.



## FEATURES

- High Performance™ Nut Plate Construction
- Brunswick Cushion Rubber
- Brunswick Certified Premium Slate
- Diamond-Shaped White Pearlized Rail Sights

Size	8' (2.4 m)
Dimensions (L x W)	98.5" x 54.5" (250.2 x 138 cm)
Weight	794 lbs* (360 kg)
Pockets	Drop Pocket
Legs	Unique
Slate	1" Framed
Cloth Color	14 options
Finish Options	Espresso

\* Shipping weight





## GLENWOOD™

A traditional table with modern sensibilities, the Glenwood is a graceful addition to any home. Plus, have it your own way with Brunswick's most versatile model. This customizable table offers a wide variety of table finishes, leg styles, and cloth. Design the perfect solid wood table for your home at an affordable price.

### FEATURES

- High Performance™ Nut Plate Construction
- Brunswick Certified Premium Slate
- SuperSpeed® Cushion Rubber
- Pearlized Rail Sights
- Base Frame Dovetails

Size	7' (2.1 m) / 8' (2.4 m) / 9' (2.7 m)
Dimensions (L x W)	86.5" x 48.5" (220 x 123.2 cm) 98.5" x 54.5" (250.2 x 138.4 cm) 110.5" x 60.5" (280.7 x 153.7 cm)
Weight	589 lbs (267.2 kg) 683 lbs (309.8 kg) 777 lbs (353.2 kg)*
Pockets	Drop Pocket
Leg Options	Ball and Claw, Round, Tapered, Talon
Slate	1" Framed
Cloth Color	14 options

Finish Options  
Espresso, Matte Black & Rustic Dark Brown. Rustic Gray (*available in 8' with tapered legs only*), Tuscana (*available in 8' with tapered legs only*)(9' *available in espresso only*)

\* Shipping weight



## LEG OPTIONS



Ball and Claw



Round



Tapered



Talon

	RUSTIC DARK BROWN		ESPRESSO			MATTE BLACK & CHESTNUT		RUSTIC GRAY		TUSCANA	
	7'	8'	7'	8'	9'	7'	8'	7'	8'	7'	8'
Ball and Claw			•	•	•						•
Round			•	•	•						
Tapered		•	•	•	•		•		•		•
Talon			•	•	•		•				



Rustic Gray



Rustic Dark Brown



Espresso



Tuscana





# BLACK WOLF™

Naturally dramatic, the Black Wolf II table is in its element in contemporary homes, from casually chic to sleek and sophisticated. Durable metal rail pocket corners, round rail sights, and jet-black laminate provide the perfect detail. Built for a lifetime of enjoyment.



## FEATURES

- High Performance™ Nut Plate Construction
- Brunswick Certified Premium Slate
- Brunswick Cushion Rubber
- Round Rail Sights
- Leg Levelers

Size	7' or 8' (2.1 / 2.4 m)
Dimensions (L x W)	89" x 51" (226 x 129.5 cm) 101" x 57" (256.5 x 144.8 cm)
Weight	621 lbs* (281.2 kg) 728 lbs* (330 kg)
Legs	Pedestal
Slate	1" Framed
Cloth Color	14 options
Finish	Black

\* Shipping weight





## BAYFIELD™

No compromises necessary when you choose the Bayfield table for your home billiard room. All the quality and details are there: wide, solid wood rails; leather shield pockets; and pearlized diamond-shaped rail sights. Baseframe, aprons, and tapered legs are built for durability with a matte black or two-tone matte black/chestnut veneer.



### FEATURES

- High Performance™ Nut Plate Construction
- Brunswick Cushion Rubber
- Brunswick Certified Premium Slate
- Diamond-Shaped White Pearlized Rail Sights

Size	8' (2.4 m)
Dimensions	98.5" x 54.5" (250.2 x 138 cm)
Weight	680 lbs* (308 kg)
Pockets	Leather Drop Pocket
Legs	Unique
Slate	1" Framed
Cloth Color	14 options
Finish Options	Matte Black, Matte Black & Chestnut

\* Shipping weight





## ALLENTON™

A great addition to any home, the Allenton features solid wood rails, Brunswick-certified premium slate, and pearlized diamond-shaped sights to enhance your playing experience. Select the clean, strong lines of the veneered tapered legs in chestnut, espresso, tuscana, or driftwood finish, or opt for the solid wood ball and claw leg in chestnut, or espresso.





## FEATURES

- High Performance™ Nut Plate Construction
- Brunswick Certified Premium Slate
- Brunswick Cushion Rubber
- Diamond-Shaped White Pearlized Rail Sights

† 8' Tapered leg option only



Size	7' or 8' (2.1 / 2.4 m)
Dimensions (L x W)	98.6" x 47.6" (250 x 120.9 cm)
	97.6" x 53.6" (247.9 x 136 cm)
Weight	596 lbs* (270 kg)
	696 lbs* (315.7 kg)
Pockets	Leather Drop Pocket
Leg Options	Ball & Claw, Tapered
Slate	1" Finished
Cloth Color	14 options

\* Shipping weight



# BILLIARDS CLOTH

Brunswick Billiards wool cloth is fashioned to the same strict standards as the tables they lay on. Attention to detail and proprietary techniques ensure they stay uniformly resilient and aesthetically pleasing at the same time.

## CENTENNIAL® CLOTH

- 100% luxurious Merino wool weave billiard cloth available in 14 colors to reflect your room's individual style.
- Centennial cloth does not pill or shed, maintaining a clean, sleek playing surface.
- Teflon® fabric protector\* is incorporated into the cloth fibers, safeguarding the cloth and table from occasional spills and protecting your investment without affecting play.
- Heavier Centennial cloth requires less frequent recovering of the table.

## TRADITIONAL CLOTH

- Woolen billiard cloth available in 14 colors to reflect your room's individual style.
- A 2,500 lb. cylinder steams and presses the cloth to give it a harder finish ensuring little or no pilling and faster play.
- All of the wool is bleached before dyeing to provide a cleaner and more vibrant colored product.
- Exclusive shearing process provides the smoothest playing surface possible.



Brunswick Green



Timberline



Olive



Sahara



Chocolate Brown



Merlot



McIntosh



Cardinal Red



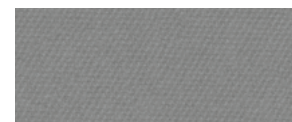
Midnight Blue



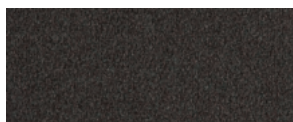
Regatta Blue



Oceanside



Gun Metal Grey



Charcoal Grey



Ebony

\* Teflon® is a registered trademark of Chemours used under license by Brunswick Billiards.



# ROOM SIZE CHART

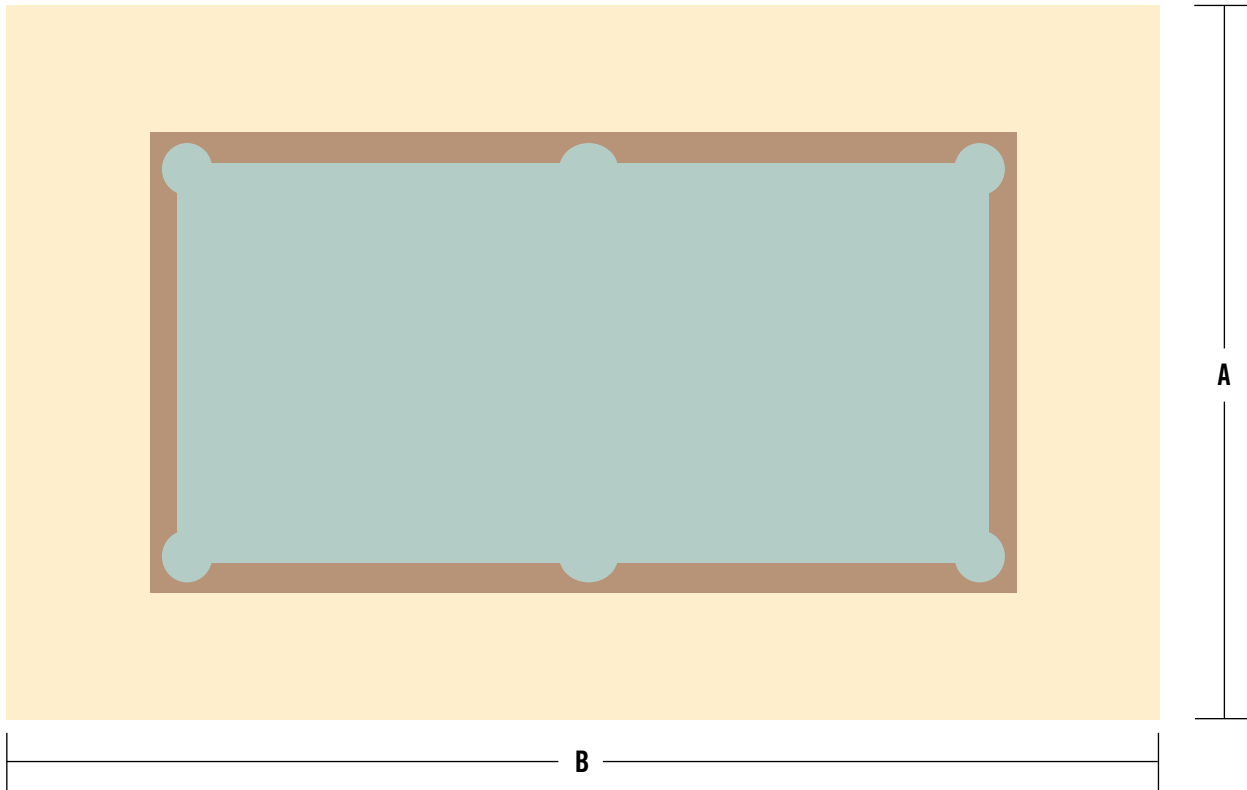
## MINIMUM SPACE REQUIREMENTS

Use the chart to determine the room size needed for a particular pool table and cue combination.

**Seven-foot table: 3' 6" x 7'** (Playing area: 38" x 76" (96.5 x 193cm)) | 13' (4 m) (A) x 16' (4.9 m)(B)

**Eight-foot table: 4' x 8'** (Playing area: 44" x 88" (111.8 x 223.5 cm)) | 13' 6" (4.2 m) (A) x 17' (5.2 m) (B)

**Nine-foot table: 4' 6" x 9'** (Playing area: 50" x 100" (127 x 254 cm)) | 14' (4.3 m) (A) x 18' (5.5 m) (B)



*Visit [brunswickbilliards.com](http://brunswickbilliards.com) for game room inspiration.*



## BRUNSWICK LIFETIME WARRANTY

Every Brunswick table is a timeless tribute to excellence in design and workmanship. Proud to stand behind every product that carries the Brunswick name, Brunswick tables are guaranteed for a lifetime.

*Please read all terms and conditions of the warranty. Brunswick reserves the right to change specifications without notice.*



## BRUNSWICK CERTIFIED SLATE

Demonstrating our enduring commitment to superior performance, Brunswick meets or exceeds all Billiard Congress of America slate specifications. Diamond honed and stringently tested, Brunswick slate is certified for quality and comes with a lifetime warranty.

*Different wood species offer unique texture and grain, as well as natural beauty. Minor variations in finish color may occur due to the natural characteristics of the wood. Photos may not be an accurate reflection of the product due to lighting conditions.*



# SHUFFLEBOARD TABLES

---

Brunswick shuffleboard tables bring modern luxuries to classic gaming. Expert craftsmanship ensures our shuffleboards perform at the highest level and genuine designs give these boards an impeccable visual aesthetic.







# BRIXTON™ SHUFFLEBOARD

## FEATURES

- Hammered metal hardware and distinctive “X” foundation design
- Hand-rubbed antique finish showcasing the natural grains and texture of the cabinet’s rough-hewn wood
- One-Piece playfield with multiple climate adjusters (four on the 12’ (3.7 m) model, six on the 14’ (4.3 m) model) Two-Piece playfield available
- Accessories include: four black weights, four red weights, built-in abacus scoring system, table brush, and shuffleboard wax

Table Size	12' / 14' / 16' (3.7 / 4.3 / 4.9 m)
Dimensions (L x W x H)	147.3" x 29.6" x 32.3" (374.14 x 75.95 x 82 cm)
	171.3" x 29.6" x 32.3" (435.6 x 75.95 x 82 cm)
	195.3" x 29.6" x 32.3" (496.06 x 75.95 x 82 cm)
Weight	581 lbs* / 657 lbs* / 687 lbs* (263.54 / 298 / 311.62 kg)
Finish	Driftwood
Options	Two-Piece Playfield



\* Shipping weight





# MERRIMACK™ SHUFFLEBOARD

## FEATURES

- Hammered metal hardware and distinctive joinery
- Hand-rubbed antique finish showcasing the natural grains and texture of the cabinet's rough-hewn wood
- One-Piece playfield with multiple climate adjusters (four on the 12' (3.7 m) model, six on the 14' (4.3 m) model) Two-Piece playfield available
- Accessories include: four black weights, four red weights, built-in abacus scoring system, table brush, and shuffleboard wax

Table Size	12' / 14' / 16' (3.7 / 4.3 / 4.9 m)
Dimensions (L x W x H)	147.3" x 29.6" x 32.3" (374.14 x 75.95 x 82 cm)
	171.3" x 29.6" x 32.3" (435.6 x 75.95 x 82 cm)
	195.3" x 29.6" x 32.3" (496.06 x 75.95 x 82 cm)
Weight	630 lbs* / 706 lbs* / 767 lbs* (263.54 / 298 / 311.62 kg)
Finish	Nutmeg
Options	Two-Piece Playfield



\* Shipping weight





# CANTON™ SHUFFLEBOARD

## FEATURES

- Aged metal turn-buckle stretcher, corners, and hardware
- Hand-rubbed antique finish showcasing the natural grains and texture of the cabinet's rough-hewn wood
- One-Piece playfield with multiple climate adjusters (four on the 12' (3.7 m) model, six on the 14' (4.3 m) model) Two-Piece playfield available
- Accessories include: four black weights, four red weights, built-in abacus scoring system, table brush, and shuffleboard wax

Table Size	12' / 14' / 16' (3.7 / 4.3 / 4.9 m)
Dimensions (L x W x H)	147.3" x 29.9" x 32.3" (374.14 x 75.95 x 82 cm)
	171.3" x 29.9" x 32.3" (435.6 x 75.95 x 82 cm)
	195.3" x 29.9" x 32.3" (496.06 x 75.95 x 82 cm)
Weight	600 lbs* / 680 lbs* / 749 lbs* (272 / 308 / 340 kg)
Finish	Black Forest
Options	Two-Piece Playfield

\* Shipping weight





# SANIBEL™ SHUFFLEBOARD

## FEATURES

- Weathered finish showing natural grain and texture
- Modern style with clean lines
- Climate adjusters
- Accessories include: four black weights, four red weights, built-in abacus scoring system, table brush, and shuffleboard wax

Table Size	12' / 14' (3.66 / 4.27)
Dimensions (L x W x H)	145.9" x 28.4" x 32.1" (370.6 x 72.1 x 81.5 cm) 169.9" x 28.4" x 32.1" (431.5 x 72.1 x 81.5 cm)
Weight	626 lbs* / 730 lbs* (284 / 331 kg)
Finish Options	Rustic Grey, Rustic Dark Brown
Options	Two-Piece Playfield



\* Shipping weight

# ANDOVER™ SHUFFLEBOARD

## FEATURES

- One-Piece playfield with multiple climate adjusters (four on the 12' model, six on the 14' model) Two-Piece playfield available
- Includes accessories: abacus set, four black weights, four red weights, board sweep, and shuffleboard wax
- Includes under cabinet storage areas

Table Size	12' / 14' (3.7 / 4.3 m)
Dimensions (L x W x H)	147.4" x 29.9" x 32.1" (374.1 x 75.9 x 81.5 cm) 171.4" x 29.9" x 32.1" (435.4 x 75.9 x 81.5 cm)
Weight	531 lbs* / 596 lbs* (240.1 / 270 kg)
Finish Options	Rustic Dark Brown, Espresso, Driftwood
Options	Two-Piece Playfield



\* Shipping weight



# DELRAY™ SHUFFLEBOARD

## FEATURES

- One-Piece playfield with multiple climate adjusters (four on the 12' model, six on the 14' model) Two-Piece playfield available
- Includes accessories: abacus set, four black weights, four red weights, board sweep, and shuffleboard wax
- Under cabinet storage shelf
- Optional scorer available
- Optional light set (of two) available



Table Size	9' / 12' / 14' (2.7 / 4.3 / 4.9 m)
Dimensions (L x W x H)	110.3" x 24.63" x 32.3" (280.16 x 62.56 x 82 cm)
	146.1" x 28.7" x 32.3" (371.1 x 72.9 x 82 cm)
	170.1" x 28.7" x 32.3" (432.1 x 72.9 x 82 cm)
Weight	320 lbs* / 546 lbs* / 620 lbs* (145 / 247.7 / 281
Finish	Black
Options	Two-Piece Playfield (12' & 14' Only)

\* Shipping weight

# 2-PIECE SHUFFLEBOARD PLAYFIELD

## FEATURES

- Two-Piece playfield for hard to reach areas and easier handling
- Rigid rock-solid center connection; handles as one-piece once assembled
- Same playability and climatic adjusters as one piece playfields

Table Size	12' / 14' / 16'
Dimensions (L x W x H)	147.3" x 29.9" x 32.3"
	171.5" x 29.9" x 32.3"
	195.3" x 29.6" x 32.3"
Weight	581 lbs* / 657 lbs* / 687 lbs*



\* Shipping weight



# SHUFFLEBOARD ACCESSORIES



## SHUFFLEBOARD LIGHT SET

Easy to install table lights keep the play surface illuminated no matter where you place your shuffleboard table. Sturdy steel construction with black finish will complement any surroundings. Set of two fits the Andover, Delray, Brixton and Merrimack shuffleboard tables.



## SHUFFLEBOARD SCORER

This beautiful Brunswick-branded electronic scorer keeps your attention on the game. Spend your time setting up the next shot and leave the score to this accurate, easy to install unit. Straddles the table so players at each end know the score at a glance. Fits the Brixton, Merrimack, Delray, and Andover shuffleboard tables.



## SHUFFLEBOARD BOWLING PINS

Turn one classic game into two with Brunswick's Shuffleboard Pins. Crafted out of solid wood, this miniature bowling set includes a wooden rack for easy set-up and 10 matching pins — adding a whole new level of competition to your shuffleboard table.



## SHUFFLEBOARD WAX

Designed to help maintain optimum playability, Brunswick's shuffleboard wax allows you to have perfect control of your game.



## SHUFFLEBOARD WEIGHT SET

Made from heat-treated hardened steel, Brunswick Billiards chrome-plated shuffleboard weights meet TSA tournament specifications. Includes four red and four black weights.



# TABLE TENNIS

---

Brunswick Billiards gives table tennis a treatment of modern finesse. Enjoy a premium experience—whether just starting off or an expert in training.





# SMASH 7.0™ TABLE TENNIS

## FEATURES

- Black playing surface with repeat roller coating
- Material: 25mm thick MDF
- Frame: 20mm x 60mm heavy gauge steel tubing with silver powder coating
- Carriage: 40mm x 40mm heavy gauge steel tubing with silver powder coating
- Caster diameter: 100mm
- Premium net, post clamps and a ball & paddle set included
- Folds up for storage

Dimensions	108" x 60" x 30" (274 x 152 x 76.2 cm)
(L x W x H)	36" x 60" x 63" (folded) (91 x 152 x 160 cm)

Weight	265 lbs* (120 kg)
--------	-------------------

Finish Options	Black
----------------	-------

\* Shipping weight



# SMASH 7.0™ I/O TABLE TENNIS

## FEATURES

- Designed for indoor or outdoor play
- Black playing surface with repeat roller coating
- Material: 4mm aluminum clad ABS
- Frame: 20mm x 60mm heavy gauge steel tubing with silver powder coating
- Carriage: 50mm x 50mm heavy gauge steel tubing with silver powder coating
- Caster diameter: 125mm
- Premium net, post clamps and a ball & paddle set included
- Folds up and rolls away for storage

Dimensions	108" x 60" x 30" (274 x 152 x 76.2 cm)
(L x W x H)	36" x 60" x 63" (folded) (91 x 152 x 160 cm)

Weight	176 lbs* (79.8 kg)
--------	--------------------

Finish	Black
--------	-------

\* Shipping weight





# SMASH 5.0™ TABLE TENNIS

## FEATURES

- Blue playing surface with repeat roller coating
- Material: 18mm thick MDF
- Frame: 20mm x 50mm heavy gauge steel tubing with silver powder coating
- Carriage: 35mm x 35mm heavy gauge steel tubing with silver powder coating
- Caster diameter: 75mm
- Premium net, post clamps, and ball & paddle set included
- Folds up for storage

Dimensions	108" x 60" x 30" (274 x 152 x 76.2 cm)
(L x W x H)	36" x 60" x 63" (folded) (91 x 152 x 160 cm)
Weight	220 lbs* (99.8 kg)
Finish	Blue

\* Shipping weight



# SMASH 3.0™ TABLE TENNIS

## FEATURES

- Green playing surface with repeat roller coating
- Material: 16mm thick MDF
- Frame: 20mm x 40mm heavy gauge steel tubing with silver powder coating
- Carriage: 30mm x 30mm heavy gauge steel tubing with silver powder coating
- Caster diameter: 50mm
- Premium net, post clamps, and ball & paddle set included
- Folds up for storage

Dimensions	108" x 60" x 30" (274 x 152 x 76.2 cm)
(L x W x H)	36" x 60" x 63" (folded) (91 x 152 x 160 cm)
Weight	176 lbs* (79.8 kg)
Finish	Green

\* Shipping weight



# TABLE TENNIS ACCESSORIES

---



## TABLE TENNIS PADDLE AND BALL SETS

Be ready to play anytime with performance-quality rackets and Brunswick balls with high control characteristics for consistent play and precision. Choose from a two- or four-player pack.



## TABLE TENNIS PREMIUM NET & POST

Our premium tournament-grade net and post system features high performance steel post and clips. The assembly is a simple snap and the net has easy adjustments. The premium cotton blend net measures 69.25".

# TABLE TENNIS CONVERSION TOPS

---



## CT8 TABLE TENNIS CONVERSION TOP

The friendly competition never ends with this durable, foam pad-backed table tennis conversion top. Includes everything you need to become the next neighborhood champ, including paddles, balls and clip-on net. This game top from Brunswick is manufactured to meet California's formaldehyde emissions regulations.



## CT7 TABLE TENNIS CONVERSION TOP

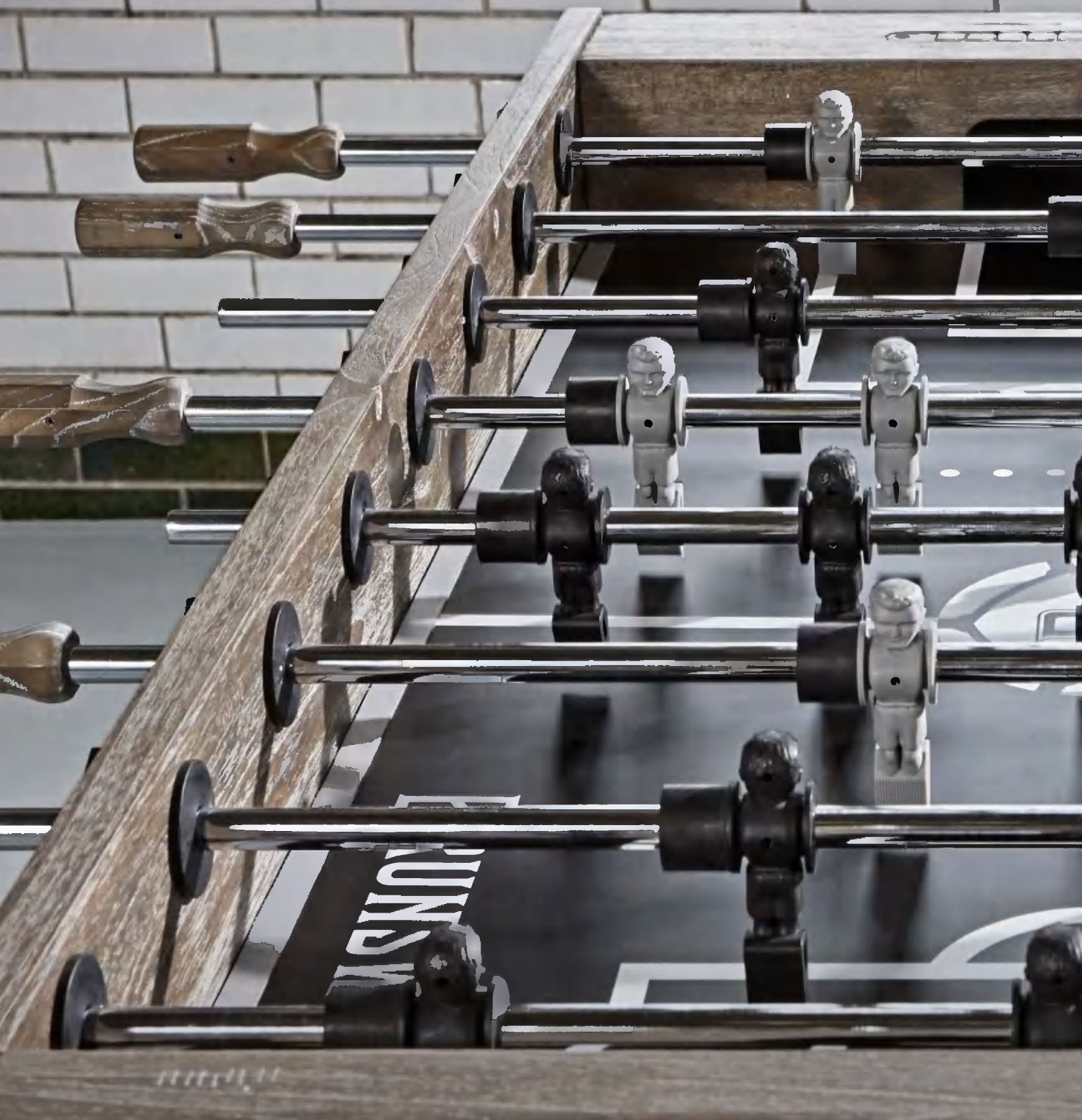
Features a durable foam pad-backed top and measures 54" W x 92.3" L. Fits seven-foot Brunswick pool or air hockey tables and includes paddles, balls, and clip-on net. This game top from Brunswick is manufactured to meet California's formaldehyde emissions regulations.



## TABLE TENNIS CONVERSION TOP CADDY

This space saving caddy is ideal for storing Brunswick table tennis conversion tops when not in use. Compact with a contemporary black finish and sturdy black caster wheels allowing for easy mobility. Compatible with both the Brunswick CT7 table tennis conversion top and the CT8 table tennis conversion top.





# FOOSBALL TABLES

---

Get the whole family involved with our premium Brunswick Foosball tables. The quality craftsmanship of these tables allows you to control your game with precision and a variety of styles provide a great match for any space.







## MERRIMACK™ FOOSBALL

### FEATURES

- Hammered metal hardware and distinctive joinery
- Hand-rubbed antique finish showcasing the natural grains and texture of the cabinet's rough-hewn wood
- Three-man goalie for fast play
- Pre-assembled player roads with three-piece bearings
- End ball returns
- Includes four balls

Dimensions (L x W x H) 56" x 56" x 36" (142 x 142 x 91 cm)

Weight 202 lbs\* (91.6 kg)

Finish Nutmeg

\* Shipping weight







# BRIXTON™ FOOSBALL

## FEATURES

- Hammered metal hardware and distinctive "X" foundation design
- Hand-rubbed antique finish showcasing the natural grains and texture of the cabinet's rough-hewn wood
- Three-man goalie for fast play
- Pre-assembled player rods with three-piece bearings
- End ball returns
- Includes four balls

Dimensions (L x W x H) 56" x 56" x 36.3" (142 x 142 x 91 cm)

Weight 177 lbs\* (80.3 kg)

Finish Driftwood

\* Shipping weight







# PREMIER™ FOOSBALL

## FEATURES

- Sturdy vinyl cabinet and melamine play surface
- Three-man goalie for fast play
- Unique metal “X” frame base for increased stability
- Pre-assembled player rods with three-piece bearings
- End ball returns
- Adjustable levelers

Dimensions (L x W x H) 56.3" x 49.8" x 36" (143 x 126.5 x 91 cm)

Weight 250 lbs\* (113.4 kg)

Finish Weathered Oak

\* Shipping weight





# KICKER™ FOOSBALL

## FEATURES

- Brunswick exclusive sturdy cabinet with a matte black finish
- Three-man goalie offers a wall of defense and incredibly fast play
- Adjustable leg levelers make installation and leveling easy on uneven floors
- Externally-attached cup holders secure refreshments away from the playing surface
- Dual-side ball returns make ball retrieval easy and keeps the game fast

Dimensions (L x W x H) 56" x 30" x 35"

Weight 181 lbs\*

Finish Matte Black



\* Shipping weight

# EURO SCORER™ FOOSBALL

## FEATURES

- One-man goalie for realistic play
- Inclined corners for fast, non-stop play
- Sturdy cabinet with a scratch-resistant laminate in a rich walnut finish
- Brunswick exclusive humanistic counter-balanced men allow easier cross-court shots
- Laminate playfield with full-color logo
- Chrome-plated steel rods (0.62" diameter/0.12" thick wall) resist bending and withstand abuse
- Four integral and removable rubber cup holders keep refreshments securely away from the playing surface
- Adjustable leg levelers

Dimensions (L x W x H) 56.3" x 29.5" x 37" (143 x 74.9 x 94 cm)

Weight 193 lbs\* (87.5 kg)

Finish Walnut



\* Shipping weight

# AIR HOCKEY TABLES

---

This arcade attraction offers years of family fun. Brunswick Billiards air hockey tables provide everything you need to keep score and keep your table operating smoothly.







# PREMIER™ AIR HOCKEY

## FEATURES

- Unique metal “X” frame base for increased stability
- Convertible game table covers allow for multi-functional use of the table
- Adjustable leg levelers
- Dual embedded abacus scorers
- Commercial grade play surface with unique graphics
- Commercial grade blower motor
- Accessories included: two white mallets and four pucks (two red, two black)



Table Size	6' (1.8 m)
Dimensions (L x W x H)	87" x 47" x 31.25" (221 x 119 x 79.4 cm)
Weight	187 lbs* (84.8 kg)
Finish	Weathered Oak

## BLOWER SPECIFICATIONS

Voltage 110VAC  
Frequency 60Hz  
Current 1.5A  
Power 120W  
CFM 254

\* Shipping weight

# V-FORCE® AIR HOCKEY®

## FEATURES

- Exciting table top graphics and logo
- Super slick, scuff-proof surface
- Durable aluminum rails with powder-coated metal corners
- Adjustable leg levelers
- Two black mallets and four pucks included
- Dual embedded abacus scorers
- Compatible with CT7 table tennis conversion top

Dimensions (L x W x H) 83" x 41" x 30.5" (210.8 x 104 x 77.5 cm)

Weight 186 lbs\* (84.4 kg)

Finish Black



## BLOWER SPECIFICATIONS

Voltage 115VAC

Frequency 60Hz

Current 0.77A

Power 81W

CFM 215

\* Shipping weight

# WIND CHILL™ AIR HOCKEY®

## FEATURES

- Sleek, contemporary styling
- Dual embedded abacus scorers
- Sturdy pedestal base
- Constant flow UL blower
- Two black mallets and four pucks included
- Compatible with CT7 table tennis conversion top

Dimensions (L x W x H) 83.9" x 41.1" x 32.5" (213.1 x 104.4 x 82.6 cm)

Weight 149 lbs\* (67.6 kg)

Finish Black with silver corners



## BLOWER SPECIFICATIONS

Voltage 115VAC

Frequency 60Hz

Current 0.77A

Power 81W

CFM 215

\* Shipping weight





# THE ONLY GREEN

Brunswick Billiards brings you realistic putting greens designed to complement any setting





# HOW THE ONLY GREEN WORKS

## BRUNSWICK'S THE ONLY GREEN™ PUTTING GREENS OFFER THE MOST REALISTIC COURSE-LIKE CHALLENGES SUITED FOR ANY SPACE!

Our putting greens are designed to complement any setting, whether it's at your home, in the office, at a golf club, or apartment complex rec room; The Only Green putting greens maximize practice time in a minimum amount of space. Choose from The MacDonald, The Maxwell, or The Ross and find the perfect model for you based on your needs, whether it be competitive pricing, break stations, green elevation or the perfect size for your space.



Proprietary putting surface comes in a speed of 12.5 on the stimp meter. Green speed developed by PGA professionals and instructors predominantly recommending a true, tournament speed green.



A trouble-free mechanism housed within The Only Green enables players to set four different elevations of break into the green at each of the break stations. The ends of the green may also be elevated for uphill and downhill putts.

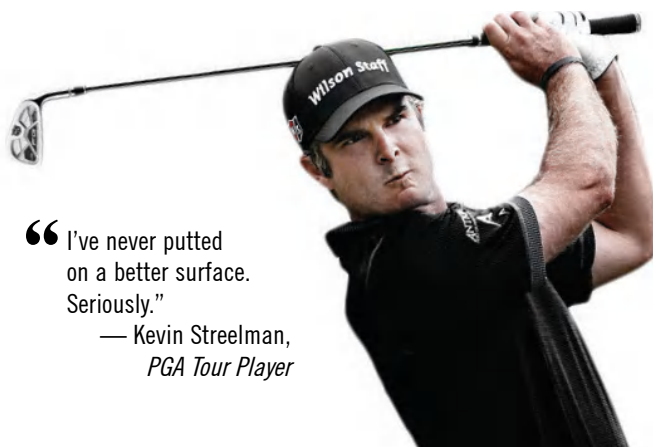


Elevations can be easily adjusted either by hand or from the standing position with any cavity back putter. Simply raise the knob in the vertical slot while sliding the other adjustment knob to the desired A through D break elevation, D being the highest elevation.



“The Only Green surface and adjustability will flat out make you a better putter.”

— Stan Utley,  
*PGA Instructor*



“I've never puttied on a better surface. Seriously.”

— Kevin Streelman,  
*PGA Tour Player*





\*Putters not included.

# THE MACDONALD™

## FEATURES

- Six break stations, one on each side, for up to 50,000 break combinations
- Can be easily elevated on two ends to practice uphill and downhill putts
- Solid hardwoods and veneers material
- Green comes with one cup, one side step, and one headboard that also serves as a ball-stop



Size

Dimensions (L x W x H) 142.7" x 47.8" x 4"  
 Side Step 24" x 14" x 3.7"  
 Putter Rack 13.5" x 12" x 30"  
 Weight 427 lbs\*

Finish Options

Espresso

## ACCESSORIES

Matching putter rack that holds up to four putters, balls, and two drinks







*\*Putters not included.*

# THE MAXWELL™

## FEATURES

- Four break stations for up to 1,000 break combinations
- Can be easily elevated on two ends to practice uphill and downhill putts
- Green comes in three 3' x 3' sections with one cup, one side step, and one headboard that also serves as a ball stop



## ACCESSORIES

Matching putter rack that holds up to four putters, balls, and two drinks



Size

Dimensions (L x W x H) 107.6" x 35.5" x 4"

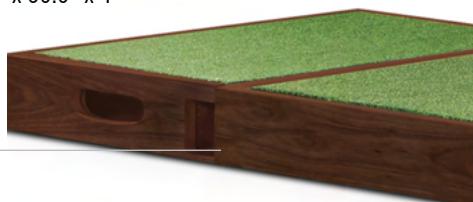
Side Step 24" x 14" x 3.7"

Putter Rack 13.5" x 12" x 30"

Weight 235 lbs\*

Finish Option

Espresso







\*Putters not included.

# THE ROSS™

## FEATURES

- Two break stations, one on each side, for up to 50 break combinations
- Can be easily elevated on two ends to practice uphill and downhill putts
- Green comes with one cup, one side step, and one headboard that also serves as a ball-stop



## ACCESSORIES

Matching putter rack that holds up to four putters, balls, and two drinks



Size

Dimensions (L x W x H) 95.6" x 23.56" x 4"

Side Step 24" x 14" x 3.7"

Putter Rack 13.5" x 12" x 30"

Weight 208 lbs\*



Finish Options

Espresso





# GAME ROOM FURNITURE

Our superb selection of finely crafted furniture — tables, chairs, stools, and more — add both comfort and style to any room





# CENTENNIAL COLLECTION

The Centennial line is Brunswick's premium furniture collection. Made from beautiful solid hardwood, these items features gracefully arched legs accented with aged metal accents that provide a distinctively modern flair to any room. Choose from espresso, rustic grey, wire brush and mix-n-match finish options.

## CENTENNIAL™ GAME TABLE

Like having two tables in one, the Centennial Game Table's top can be turned over to reveal a hardwood veneer dining surface. The gaming side features a luxurious yet spill-resistant playing surface.



Beautiful hardwood veneer dining surface, masterfully woven from alternating species of wood. (Espresso only)



Deep beverage holders complete with Brunswick coasters and generous chip holders.



Convenient built-in compartment for all game accessories.



Rustic Dark Brown



Espresso



Rustic Grey



Mix-N-Match



Espresso



Black Wire Brush



Rustic Grey



Rustic Dark Brown

### CENTENNIAL™ HIGH BACK GAME CHAIR

Settle in for a memorable night of fun and games in the uncompromising comfort of the distinctive new Centennial Game Chair. Featuring solid wood construction, this chair reclines, swivels, and adjusts in height to accommodate even the most animated of players. Choose either espresso, rustic dark brown, rustic grey, black wire brush or mix-n-match.



Black Wire Brush



Rustic Grey



Espresso

### CENTENNIAL™ BAR STOOL

The traditionally-styled Classic Centennial Bar Stool is designed to match your favorite billiard table and furniture. Features include an easy-swivel seat, unique metal detail, and a comfortable 32" seat height. Choose either espresso, rustic dark brown, rustic grey, black wire brush or mix-n-match. Sold as a set of two. A perfect complement to the Centennial Pub Table, Heritage Pub Table, or Brunswick Pub Table.





Espresso



Black Wire Brush



Rustic Grey



Rustic Dark Brown

### CENTENNIAL™ PUB TABLE

Take your seat around this inviting pub table for many enjoyable evenings with family and friends. With its signature arched legs and 42" height, the Centennial Pub Table provides timeless style and comfort. As beautiful as it is functional, the gracefully arched legs with their distinctive aged wrought iron ring base create a stylishly contemporary silhouette. Choose either espresso, rustic dark brown, rustic grey, black wire brush or mix-n-match.



### CENTENNIAL™ PLAYER'S CHAIR

A beautiful reproduction of a Brunswick chair from 1923. Designed to complement all billiard rooms, the player's chair adds class and elegance to any home. Features include comfortable pin-nailed seat cushion, hidden storage drawer, two cue notches and two cup holders in the armrests, and foot rest with black protector. Offered in black wire brush, espresso, rustic dark brown and rustic grey finishes.





### CENTENNIAL™ STORAGE BENCH

- Materials: Solid hardwood, hardwood plywood, and wood product.
- Storage for all accessories included in our Centennial Play Package.
- Gas-assist hinges for easy open and close.
- Seats three comfortably

Dimensions (L x W x H)	75.5" x 22.5" x 21.5" (192 x 57.2 x 54.6 cm)
------------------------	---

Finish Options	Rustic Grey
----------------	-------------

Weight	90 lbs (40.8 KG)
--------	------------------



### SÃO BENTO™ PUB & STOOLS

Style, comfort and beauty define this modern Pub set that will be the envy of your friends & family. Sao Bento is a Brazilian inspired design that features a tempered glass tabletop, metal wireframe footrest and solid wood legs. Take your seat on matching bar stools that are equally unique with their low profile upholstered back & seat and metal wireframe footrest.

Table Dimensions (W x H)	27.5" x 40.5" (69.9 x 102.9 cm)
--------------------------	---------------------------------

Finish Options	Chestnut, Espresso
----------------	--------------------

Seat Height	29" (73.7 cm)
-------------	---------------

Finish Options	Chestnut, Espresso
----------------	--------------------



# TRADITIONAL COLLECTION

---



## TRADITIONAL PLAYER'S CHAIR

Take a seat while your opponent tries to run the table. Featuring a plush seat and back, a drink coaster built into one arm and cue holder in the other, the Traditional Player's Chair is the perfect place to wait your turn. You'll sit high enough to see all the action with its 26.5" seat height. Offered in a beautiful chestnut, rustic brown or espresso finish.



## TRADITIONAL PUB TABLE

With timeless style and comfort, the Traditional Pub Table completes any game room setting. This table features a 30" round top with a smooth finish, a 42" height, and an eclectic prism-shaped solid wood pedestal and base. Available in a rich chestnut, rustic brown or espresso finish.



## TRADITIONAL BACKLESS PUB STOOLS

Constructed from solid wood with a cushioned seat that swivels, the Traditional Backless Pub Stools perfectly complement your favorite billiard table or other game room furnishings. You'll sit comfortably on the 30" high seat of man-made materials. Available in a rich chestnut, rustic brown or espresso finish.

# DARTBOARD CABINETS



Espresso

## TRADITIONAL DARTBOARD CABINETS

The Brunswick dartboard cabinet doors feature double chalk scoreboards, magnetic catches, chalk groove, and dart holders for storage. Features a cork backboard for steel-tip darts. Cabinet holds most steel- and soft-tip darts. Constructed of hardwood and hardwood veneers. Dartboard and darts not included.

Dimensions (L x W x D) 37" x 30.5" x 7.5"

Weight 53 lbs

Finish Options Espresso, Rustic Grey, Black Wire Brush



Black Wire Brush



Rustic Grey

# STORAGE DRAWER

## STORAGE DRAWER

- Materials: Steel mechanical actuation with gas-assist hinges. Hardwood and wood product.
- Under table storage for all accessories included in our Centennial Play Package.
- Can be used on most of our Billiards Table Collection

Dimensions (L x W x H Ext) 44.5" x 35.5" x 18.5"

Dimensions (L x W x H Fld) 44.5" x 27.75" x 7.5"

Finish Options Black

Weight 46 lbs







# BILLIARD CUE RACKS

We put the same level of detail and craftsmanship into all our products, including our line of cues, ball racks, pocket balls, and other accessories.



# HERITAGE CUE RACKS

---



## HERITAGE™ WALL RACK

Round out your Heritage collection or accent your existing decor with this beautiful closed back transitional wall rack. The distinguished Louis-Philippe style angled header panel crowns storage for eight cues or seven cues and one bridge, 8-ball rack, 9-ball rack, set of billiard balls, brush, and chalk. Available in espresso, matte black, driftwood & rustic dark brown.



## HERITAGE™ FLOOR RACK

This freestanding floor rack is designed to hold up to eight cues, two ball racks, chalk, table brush, and additional accessories. Available in chestnut, espresso, matte black, driftwood, rustic grey, rustic dark brown and tuscan.



## PURSUIT™ WALL RACK

A work of art that will command attention in any setting, the Pursuit billiard table and matching wall rack is a combination of streamlined, angular aesthetics, a contemporary black wire brushed finish and Brunswick's superior craftsmanship.



## BIRMINGHAM™ WALL RACK

A match to the Birmingham billiards table, the Birmingham wall rack features the same rustic charcoal finish and industrial design elements. Includes a decorative iron plate with the Brunswick Billiards mark. Designed to hold eight cues or seven cues and the bridge stick. Available in charcoal finish.



## BRIXTON™ WALL RACK

The perfect complement to the Brixton billiards table featuring the same antiqued finish, contemporary "X" design, and hammered metal details. Holds eight cues or seven cues and one bridge. Available in driftwood finish.





### CANTON™ WALL RACK

Rustic-meets-industrial charm with the Park Falls billiards table and matching wall cue rack. Designed to hold eight cues or seven cues and one bridge, the Canton wall rack is available in black forest or rustic grey finish (shown).



### EDINBURGH® WALL RACK

A match to the Edinburgh billiards table, the Edinburgh wall racks features the same alternating white oak and ash grained wood with rustic metal trim and fastener heads. Designed to hold eight cues or seven cues and the bridge stick. Available in weathered oak finish.



### MACKENZIE™ WALL RACK

A unique balance between traditional and contemporary styling, the Mackenzie wall rack is perfectly balanced with the stunning finish and profile of the Mackenzie pool table. Holds up to eight cues or seven cues and a bridge stick. Available in aged linen finish.



### MERRIMACK™ WALL RACK

A perfect pair to the Merrimack billiards table featuring the same hand-rubbed finish and distinct accents — artisan joinery and hammered metal hardware. Holds eight cues or seven cues and one bridge. Available in nutmeg finish.



### SANIBEL™ WALL RACK

A modern design with ultra clean lines and minimalist aesthetic, the Sanibel wall rack complements the Sanibel billiards table. Designed to hold up to seven cues plus the bridge stick. Available in rustic gray and rustic dark brown finishes.

# BRUNSWICK CUE COLLECTION

---

We put the same level of detail and craftsmanship into all our products including our line of cues, ball racks, pocket balls, and other accessories.





# BRUNSWICK CUE COLLECTION

---



**LJ1** Canadian Maple / Stainless Steel Uni-Loc Joint



**DS1** Canadian Maple / Stainless Steel Uni-Loc Joint



**JB1** North American Hard Rock Maple / Stainless Steel Uni-Loc Joint



**JB2** North American Hard Rock Maple / North American Birdseye Maple / Stainless Steel Uni-Loc Joint



**JH1** Canadian Maple / Stainless Steel Joint



**AR1** North American Hard Rock Maple / Plated Metal Joint



**AR2** North American Hard Rock Maple / Plated Metal Joint





**SC1** North American Hard Rock Maple / Plated Metal Joint



**SC2** North American Hard Rock Maple / Plated Metal Joint



**JS1** North American Hard Rock Maple / North American Birdseye Maple / Stainless Steel Joint



**JS2** North American Hard Rock Maple / North American Birdseye Maple / Stainless Steel Joint



**Centennial® Cue**



**Heritage® Cue**



**Tru-Balance™ Cue**



# ACCESSORIES

At Brunswick, we put the same level of detail and craftsmanship into all our products including our line of cues, ball racks, pocket balls and other accessories. You will find everything you need to play a great game of pool and keep your Brunswick table in good shape.





# PLAY PACKAGES

---

## CENTENNIAL™ PLAY PACKAGE

Featuring our premium billiard accessories, this set includes everything you need to play the game. Contents include:

- “Getting Started” instructional DVD
- Centennial® pocket balls
- Four Centennial® cues
- Two-piece short cue
- Two-piece bridge stick
- Brass bridge head
- Big Break® rack
- Nine-ball rack
- Table brush
- Twelve pieces of chalk
- Official BCA Rule Book



## HERITAGE™ PLAY PACKAGE

The Heritage package includes:

- Heritage® pocket balls
- Four Heritage® cues
- Two-piece short cue
- Two-piece bridge stick
- Brass bridge head
- Big Break® rack
- Table brush
- Twelve pieces of chalk
- Official BCA rule book



## TRADITIONAL PLAY PACKAGE

The Contender package includes:

- Set of standard billiard balls
- Four 58" Contender® two-piece cues
- Two-piece bridge stick
- Plastic bridge head
- 8-ball rack
- Plastic table brush
- Twelve pieces of chalk





## BILLIARDS BALLS



### CENTENNIAL™ POCKET BALLS PREMIUM EDITION

Ground and polished for absolutely true and accurate roll. Constructed of 100% phenolic resin for uniform density. Centennial balls are ground and polished to radial tolerances of 0.001 of an inch. These balls represent the standard of excellence in the billiards industry.



### HERITAGE™ POCKET BALLS

Heritage pocket balls are designed for daily use. Made with high quality phenolic resin, Heritage balls are ground and polished to radial tolerances of 0.003 of an inch, for accurate, reliable performance.



### TRADITIONAL POCKET BALLS

Traditional pocket balls are designed for regular use. Made with polyester, Traditional balls are ground and polished to radial tolerances of 0.003 of an inch, for accurate, reliable performance.



# BILLIARDS COVERS

Man-made leather, available in black or brown, with a 34" wide embossed Brunswick logo. Available in Standard to fit standard seven-, eight-, and nine-foot size billiard tables; Square Corner to fit square corner eight- and nine-foot size enclosed pocket billiard tables; and V-Corner to fit commercial design billiard tables. Custom sizes available through special order.



Shuffleboard Cover



Black



Brown



Table Tennis Cover

# BILLIARDS ACCESSORIES



## 9-BALL RACK

The nine ball rack is constructed of UV coated solid maple, with reinforced corners and dowel peg joinery.



## BIG BREAK® RACK

Constructed of UV coated solid maple, with reinforced corners and dowel peg joinery, the Big Break rack is engineered to give you a tight fit for those breaks that count.



## BILLIARD CHALK 12-PIECE, BLUE

While deep in color, this chalk is lightly pigmented. It is manufactured from the finest velvet-grade silica, ensuring maximum adherence and friction qualities.

# BILLIARDS ACCESSORIES

---



## SOLID BRASS BRIDGEHEAD

The heavy-duty forged brass bridge head has wide slots for better cue control, rubber footings for stability, and it self-screws onto the bridge cue.



## BILLIARD BALL POLISH

Keep your balls playing their best with Brunswick Billiard Ball Polish and Cleaner. Formulated specifically for phenolic resin balls to keep them clean, polished and static free.



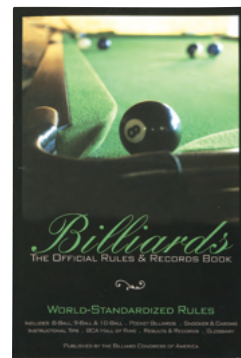
## NATURAL HAIR TABLE BRUSH

Features naturally resilient hair bristles that are gentle on your billiard cloth and designed to reach hard to get areas such as under your table cushions.



## BLUE DIAMOND CUE TIPS

Brunswick Billiards Blue Diamond cue tips are made from specially selected and treated leather and are infused with chalk. This creates a firm compressed cue tip for superb performance and playability time and time again. Available in size 9, 10, and 11.



## BCA RULE BOOK

The official rules of the Billiard Congress of America. World standardized rules for 8-Ball, 9-Ball, 14.1, One Pocket, and many other popular games. Also included are BCA Hall of Fame biographies, tournament results and records, and instructional tips.



# BILLIARDS ACCESSORIES

---



## GETTING STARTED INSTRUCTIONAL DVD

Getting Started DVD starring Ewa Mataya Laurance, a Brunswick Billiards exclusive! This DVD, starring Hall of Fame member Ewa Mataya Laurance, is jammed packed with exceptional information designed to get you started playing pool the right way. Includes information on the history of the game, caring for your billiard equipment and table, the fundamentals of how-to-play, game rules, practice drills and trick shots. This instructional DVD is a must have for all new and veteran players.

## TWO-PIECE BRIDGE STICK

Two piece bridge stick. Solid brass bridgehead sold separately.



## TWO-PIECE 48" CUE

This 48" cue is perfect for shots in tight corners or for those times you need the control and balance of a short cue.



## BRUNSWICK JUNIOR CUE

Help young beginners have fun and gain confidence while they learn the game. This unique, one-piece, 38" junior cue features an attached cue ball, so even first-timers can succeed. Perfectly scaled and built with the same high quality materials and craftsmanship as our standard cues.





BRUNSWICK



[BRUNSWICKBILLIARDS.COM](http://BRUNSWICKBILLIARDS.COM)

©2021 Life Fitness, LLC. All Rights Reserved. Brunswick and related trademarks used under license from Brunswick Corporation. Teflon is a registered trademark of The Chemours Company FC, LLC.